

VbReader 2.22 Information

Contents:

- 1.0 VbReader Support
- 2.0 What's New in This Version
 - 2.1 Version 2.01 Features
 - 2.2 Version 2.2 Features
 - 2.3 Changes to Query Files
 - 2.4 Other Changes
 - 2.5 Version 2.21 Changes
 - 2.6 Version 2.22 Changes
- 3.0 Program Requirements
- 4.0 Installation and Configuration
- 5.0 Manual Instalation (Alternative to Setup.exe)
- 6.0 Minor Irritation (DDE With Monologue)

1.0 VbReader Support

The authors intend to actively support development of VbReader. Comments and suggestions are encouraged; users can send Email to them via USENET at:

dan.page@bbs.synapse.net

or on NANET (NorthAmericaNET) on Synapse BBS as user:

DAN PAGE

The authors can also be reached on the RIME and INET Windows conferences as

DAN PAGE

VbReader is being distributed and will be supported by the authors on their BBS at modem number 613-764-0070. The BBS supports all baud rate up to 14.4 kilo baud. The settings are 8 bits, no parity, 1 stop bit.

Users can download the latest version of the program or upload trouble reports and messages at no cost.

There is also a support conference in the OttawaNet network. This conference is carried by many bbs systems in the Ottawa (Canada) region and can be accessed via Synapse BBS at:

Synapse BBS: 819-561-4321

The VbReader conference is accessible to first time callers.

2.0 What's New in This Version (V2.01 included)

This version is the result of nearly 12 months of hard work by two guys running on high-octane coffee and getting way too little sleep! Actually, we did take a small break for a couple of months! Here are some of the features that we managed to incorporate in the program. We begin by listing the features of the previous version, then the new features for this version are listed.

2.1 Version 2.01 Features

- 1- Long conference names for Internet (Usenet) mail.
- 2- Selectable .msg reply file to view, edit, and compress, independently of the packet presently loaded.
- 3- Multiple selects everywhere to select and read conferences, msgs.
- 4- Increased error checking.
- 5- Bookmarks. Messages you have read are marked and may be automatically skipped. When changing conferences, the program points to the first unread message in this conference. Bookmarks are saved with the packet, so the packet status is retained between sessions.
- 6- The program now has a button bar.
- 7- Pointers are automatically moved to the uploads directory, should you need them.
- 8- Extensive editor controls (search, replace, etc...).

- 9- Automatic renaming of packets.
- 10- Better and faster handling of the conference list.
- 11- Better Door config functions (Add, Drop, Reset pointers).
- 12- International date and time display.
- 13- Tag line Thief.
- 14- Tag file editing.
- 15- Random Tag line Selection.
- 16- Usenet mode (lower case message header info, automatic routing lines, long conference names).
- 17- Tag line can be disabled for registered users.
- 18- Extensive keyboard controls for moving through the packet and editing replies with text search and replace capability.
- 19- Store and retrieve query parameters from file.
- 20- Display of your tag line when reading your replies.
- 21- ROT13 encoding and decoding of messages.
- 22- Password encoding and decoding of private messages.
- 23- Address book of users which you can use to send mail simultaneously with automated addressing to many users, in many conferences, in many BBS systems at once.
- 24- Message Storage folders using Access Database format.
- 25- Comprehensive help file with instant access everywhere in the program. (Press F1 on the menu or dialog you need help on).
- 26- MultiLingual Support.

2.2 Version 2.2 Features

- 1- Changed the order of the "Purge Directory " query and open packet dialog, allowing you to "back out" of a Open Packet command.
- 2- Removed confirmation of multiple file deletes.
- 3- AutoSave Packet saves packet in original source directory instead of default download directory.
- 4- Added Spell Checker.
- 5- Added Alias Support.
- 6- Invisible ZIP/UnZip. While the program still requires PKWARE's PKZIP program, it runs the program invisibly in the background, at high priority. This effectively removes the annoying (for some) DOS window, while retaining the benefits of using the de-facto standard in compression software.
- 7- Added CAM_MAIL support.
- 8- Configurable reply headers. You can use keywords to assemble the quote line of your choice.
- 9- Fixed the persistence problem of the Conference and Address book items selection.
- 10- Enabled/Disable Signature text.
- 11- Bring up Message List when Clicking with right mouse button in Message text.
- 12- Bring up Conference list when clicking with right mouse button in Message List.
- 13- Configurable button bar icon size.
- 14- Multiple sorting options.

- 15- Breaks the 720 msgs per conference barrier! 2000 + messages displayed in message list.
- 16- Ability to physically remove Killed messages from message list, allowing you to view packets of unlimited size.
- 17- Added Default and Cancel buttons to often-used dialogs.
- 18- IT TALKS!!! Users who have Monologue for Windows can setup VbReader so that all interactive message boxes are spoken. Messages (or portions of messages) can also be spoken. (Thanks to Monologue and DDE).
- 19- Message Info Panel can now be placed on the bottom or the top of the screen.
- 20- TABS are now supported while editing a message. You no longer need to use CTRL+TAB.

2.3 Changes to Query Files

This version uses a slightly modified format for Query files. The old format was simply a text file with search words or phrases on each line. The first three lines contained the value of the Query dialog check box options. The rest of the file was the keywords or phrases.

```
-1  
0  
-1  
DAN PAGE  
DANIEL PAGE  
VB READER  
VB-READER  
VBREADER
```

The new format retains this but also adds a single line as the first line of the file.

This line must read:

```
A Query
```

The new format is then:

```
A Query
-1
0
-1
DAN PAGE
DANIEL PAGE
VB READER
VB-READER
VBREADER
```

The "A Query" line was added to prevent the user from loading an inappropriate file as a query. Use any text editor to do the proper modifications to your query files.

2.4 Other Changes

The "Mode Français" is no longer used. In its place, use the "International Options" to select the language and keyboard setup, and use the "Alternate" quote line for a quote line in a language other than english.

2.2 Version 2.21 Changes

Bug Fixes

Version 2.21 contains a bug fix for the Twit Filter. It got broken during the major changes required for version 2.20.

A second bug fix was to correct the messed-up status line while opening a new QWK packet while the Read Screen was displayed.

Other changes:

- 1- The program now automatically detects the internet address of the sender of a message, by searching for the **FROM:** keyword in the first line of a received message. If detected, the routing header will be automatically added to your reply when you click the **Reply** button.
- 2- If the **FROM** keyword is not detected, you may directly type the complete internet address of the recipient in the **TO:** field, while creating your reply. VbReader will detect the presence of the @ character in the **TO:** field and create the routing header when you save

the reply.

- 3- You may now save multiple messages as text simply by selecting multiple messages in the Message List and clicking on the **Save Messages As Text** in the File menu, or the button bar.

2.2 Version 2.22 Changes

Bug Fixes

Version 2.22 fixes a bug with Internet addressing which caused two routing lines to be inserted in the message under some circumstances. I had a bad week! :-)

Changes to Internet Address Procedures:

- 1- Starting with this version, the internet addressing procedure is as follows:

When creating a reply for an internet message, the program will scan the first line of the message for the **FROM:** keyword. If found, the address following the keyword will be loaded in the **TO:** field in the message information panel in the reply edit screen; otherwise, the contents of the QWK packet **FROM** field will be used.

When you save your reply, the program scans the **TO:** field of the message information panel in the reply edit screen and looks for the **@** character. If found, the contents of the field will be used to automatically create a routing line which will be added to the message as it is saved.

When you edit a previously created reply, the program functions as described above, except that it will scan for the **TO:** keyword in the first line of the reply. As you save an edited reply, a new routing line is created and the previous one replaced.

These changes make the internet addressing procedure more consistent. You no longer need to manually add a routing line, or manually correct one already inserted. All changes now are to be done at the level of the **TO:** field in the message information panel. The 25 character limitation of this field has been removed which allows the simplification of the internet addressing procedures.

3.0 Program Requirements

VbReader requires the following:

- Although **VbReader** will run on an Intel based 286 personal computer, a 386 is preferred. Note: Windowed (and Invisible) Packing and Un-Packing will not work on a 286.
- VGA or better video monitor with 800x600 or better resolution, 256 colors is preferred . Note that if you use 1024 * 768 or higher resolution, you should have a 17" or better monitor.
- Microsoft Windows 3.1 or later.
- A telecommunications program to download mail packets and to upload replies.
- PKZIP and PKUNZIP software to compress and expand mail packets.
- If you own a Sound Blaster audio board and have installed "Monologue for Windows" bundled with the board, VbReader will be able to use Monologue to read the mail out loud, as well as speak the dialog texts.

4.0 Installation and Configuration

Since you are reading this, we can assume the installation was a success!
However, just in case, here is the summary:

- 1- Unzip the kit to a diskette.
- 2- Using the file manager, double-click **setup.exe** in the distribution kit.
- 3- The program installs itself. During the process, directories on your path are scanned for old .vbx and .dll files which may interfere with the proper operation of the program. If found, such files are renamed with a .sav extension. VbReader then copies the program files in the program installation directory. It also copies the required vbx and dll files to the Windows\System directory, as per Microsoft recommendations.
- 4- The program also installs the required fonts in your system. Those are from the standard Windows 3.1 distribution kits, and are included in the

kit just in case your system does not have them installed. The program tries to install the fonts automatically. Should this procedure fail, you will have to install the fonts manually using the Control Panel\Fonts application. Invoke the control panel's font application and point it to the installation kit. The font installer will find 4 fonts. Install them all. If your system already has them, the installer will complain a little but will keep going.

- 5- Once the installation is complete, start the program and use the **Config** menu to configure the various options. **You must configure the program!** Refer to the Help File, **Configuring VbReader** topic to guide you.

5.0 Manual Installation (Alternative to Setup.exe)

In the event that the automatic installation fails, you can manually install the program by performing the following steps:

- 1- Expand and copy all VBX and DLL files to the **windows\system** directory. Use the EXPAND.EXE program shipped with Windows 3.1 and recent versions of DOS. Use the command line:

```
expand a:\threed.vb_ c:\windows\system\threed.vbx
```

Repeat for all VBX and DLL files found on the distribution disk. In all cases the destination directory is the **windows\system** directory. If you already have some of the files on your system, check the file dates and make sure the latest of all versions ends up in the **windows\system** directory.

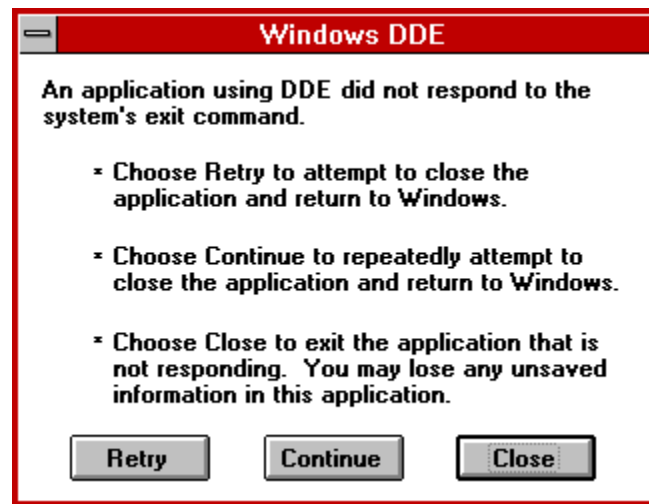
- 2- Make a directory **c:\vbreader**. Use the expand program again and copy the READER.EXE and VBANSI.EXE programs to this directory. Then copy the PIF files, the WRI files and HLP files to this directory, still using the expand program.
- 3- Make a sub directory **c:\vbreader\datafile**. In this directory, again using the expand program, copy the DCT and TXT files.
- 4- Using a text editor (NotePad should do...) edit your WIN.INI file. Add the following entry:

```
[VbReader]  
ProgDir=c:\vbreader
```
- 5- From the Main program group, invoke the Control Panel. Invoke the Fonts utility. Select the ADD function and point the font manager to the install disk. The font manager will find four fonts. Install them all. If you already have some of these fonts in your system, the font manager will complain a little but just click OK and keep going. The font manager will NOT overwrite an existing font, it will simply skip it.

- 6- Now, using the File Manager, double-click on **READER.EXE** in the **c:\vbreader** directory. The program will start and invoke the configuration menu to set up the minimum configuration items. Once that is done, invoke the configuration menu again and configure all items.

5.0 Minor Irritation (DDE With Monologue)

On rare occasions, the DDE link between Monologue For Windows and VbReader is not properly closed. The following System message is generated some time after VbReader is closed:



The action to take in this occurrence is the Close command which will terminate the lost link.

Note that this can only happen when the Speak option has been used (Spoken Message Box or Message Text). This intermittent problem seems to come from Monologue For Windows. Future release of the VbReader application may have this problem resolved..

Hope you like the program!

Daniel and Gilles Pagé
dan.page@bbs.synapse.net